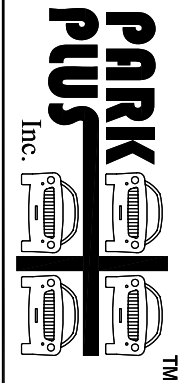


DATE: _____
 DRAWN BY: _____
 CHECKED BY: _____
 PROJECT DRAWING



480 MAIN AVENUE UNIT 1
 WALLINGTON, NJ 07057
 TEL: (973) 574-8020
 FAX: (973) 574-8030
 www.parkplusinc.com
 email: info@parkplusinc.com

PROJECT LIFT SLIDING PARKING SYSTEM
 TECHNICAL SPECIFICATION
 SEMI-AUTOMATED PARKING SYSTEM

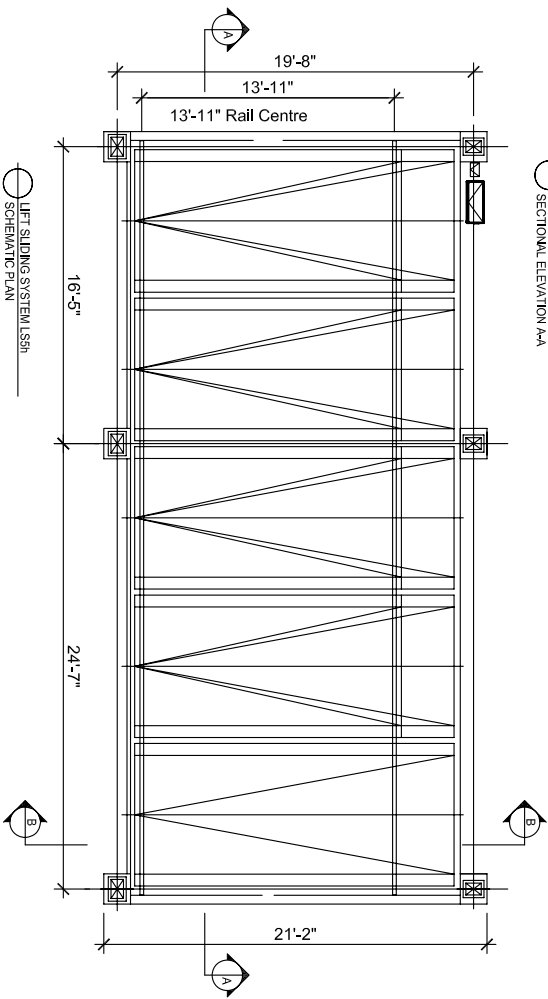
DRAWING DESCRIPTION
 MODEL LS5h

REVISIONS:
 ▽

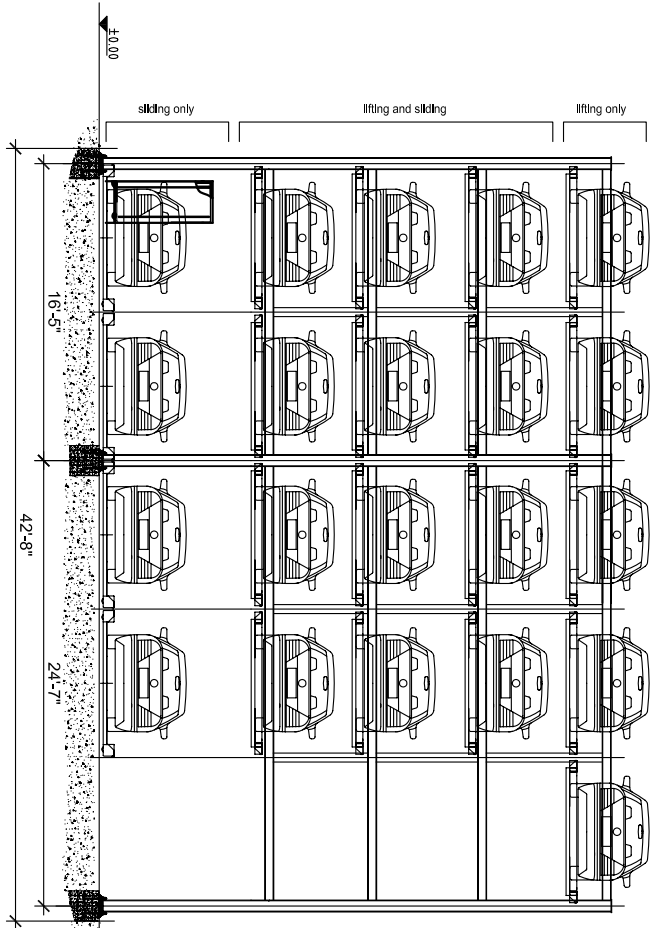
THIS CONFIDENTIAL DOCUMENT IS THE PROPERTY OF PARK PLUS, INC. AND SHALL NOT BE GIVEN, COPIED OR REPRODUCED WITHOUT PRIOR WRITTEN CONSENT.

PARK PLUS Inc.™
 PARKING SYSTEMS

○ LIFT SLIDING SYSTEM LS5h
 SCHEMATIC PLAN



○ LIFT SLIDING SYSTEM LS5h
 SECTIONAL ELEVATION A-A



○ LIFT SLIDING SYSTEM LS5h
 SECTIONAL ELEVATION B-B

